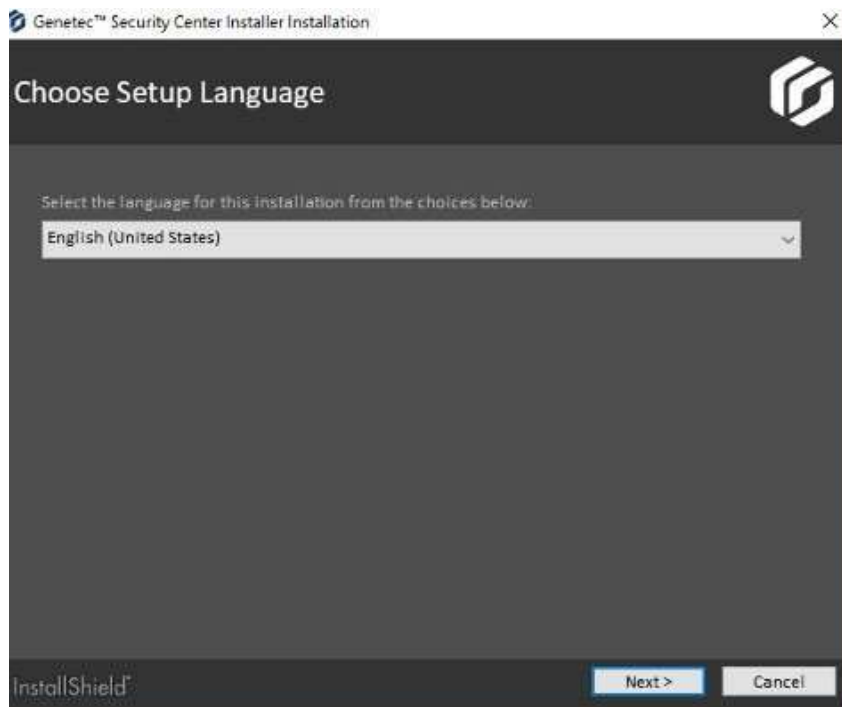


Install of Genetec Security Center

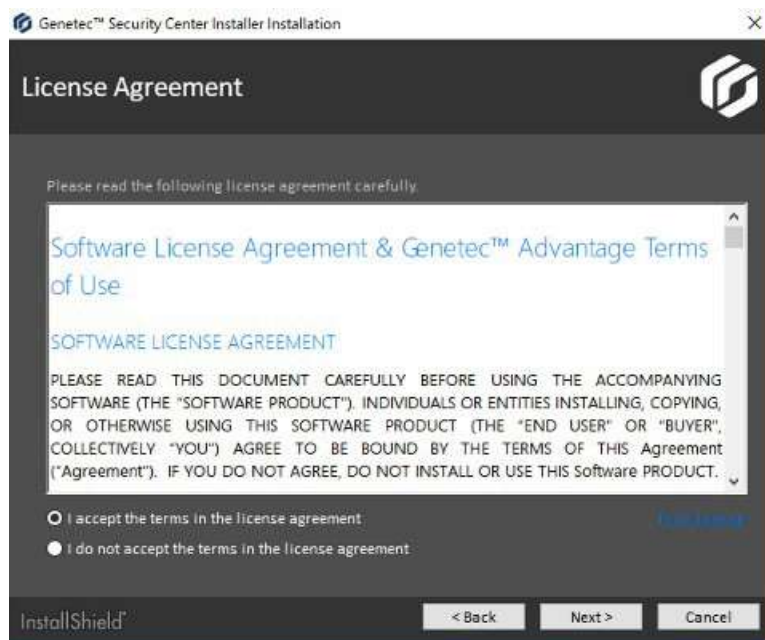
Run Setup.exe and then Choose the Setup Language....



Hit Next to Continue....

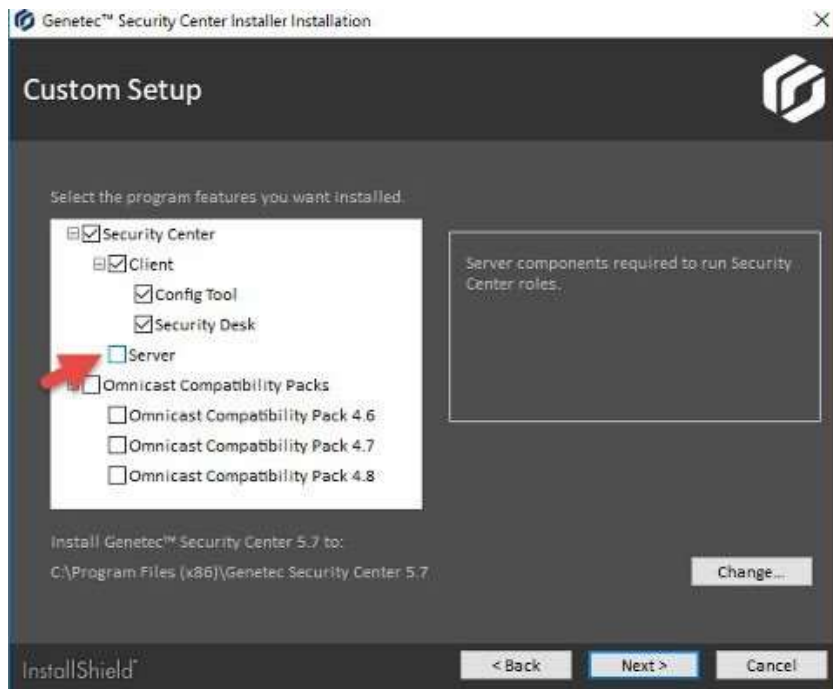


Thoroughly read the License Agreement and hit agree once you've read every word carefully....



c

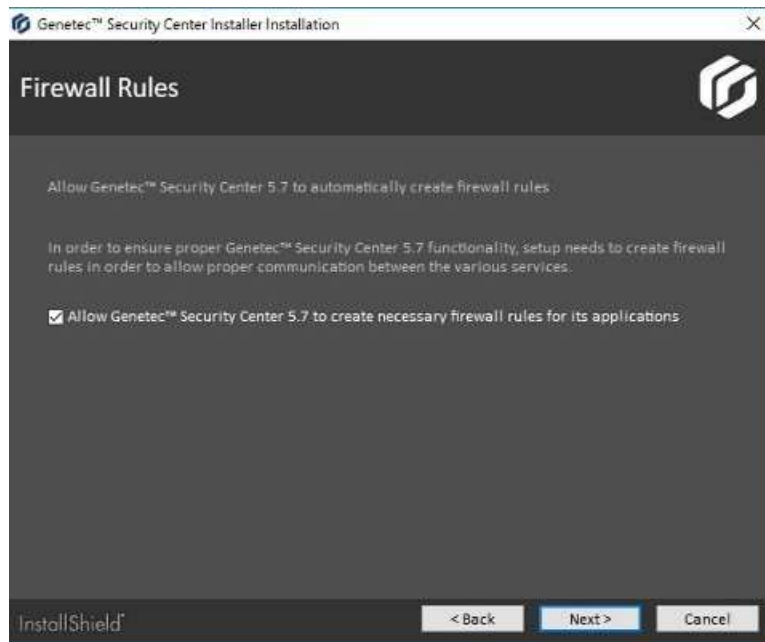
Uncheck Server as we don't want the Server component installed on the users workstation...



Chose the Language install...

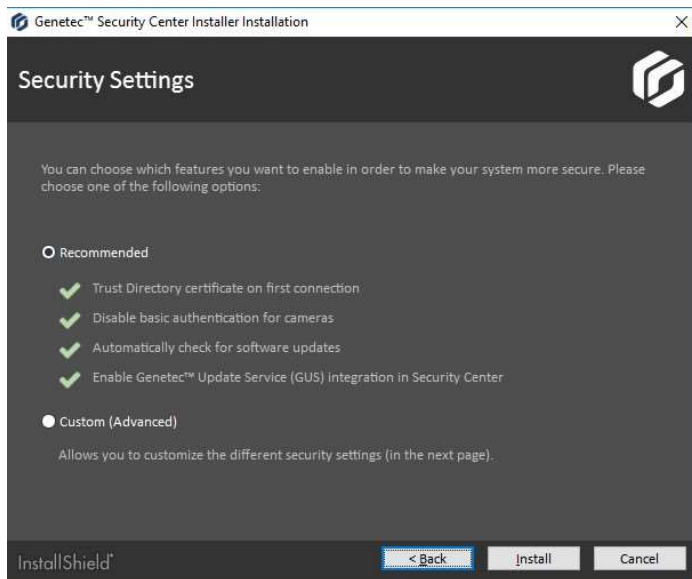


Allow Genetec to create the necessary firewall rules....



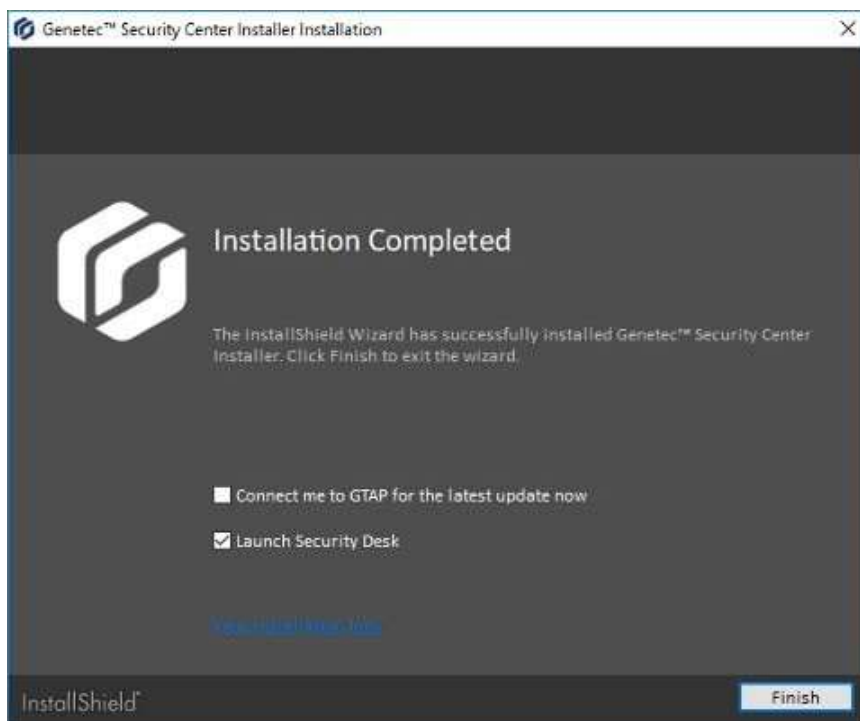
Choose Custom (Advanced) install.....



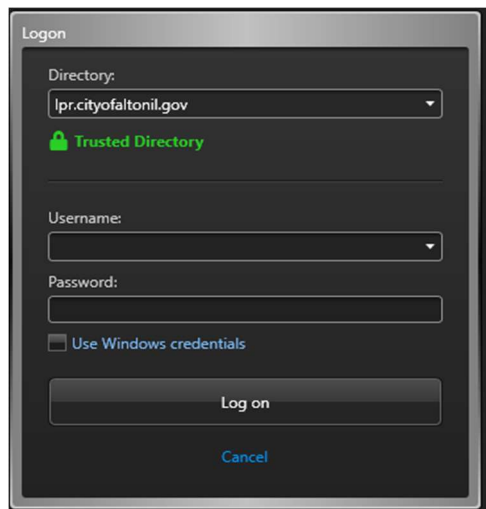


Patiently wait for the install to complete....

Launch Security Desk



Type in lpr.cityofaltonil.gov for the Directory and accept the certificate if prompted to do so.



For Active Directory Environments that want the Directory name to auto populate follow these instructions

Create a GPO Named Genetec Security Desk Login Path

Create a User Policy | Preferences | Windows Settings | Files.....with the following settings Action

Replace

Source Files: <\\YOURDOMAIN\netlogon\updates\Genetec\LoginOptionsExtension.xml>

Destination File: C:\Users\%username%\AppData\Local\Genetec Security Center 5.9
\LoginOptionsExtension.xml

The sample LoginOptionsExtension.xml file can be downloaded at

lpr.cityofaltonil.gov/downloads/Tools/LoginOptionsExtension.xml